

# OBDII Scan Tool (On-Board Diagnostic System)



**CarChip®**

## The Power of OBDII working for you.

OBDII - second generation on-board diagnostics — refers to the computer-control systems found on all cars and trucks, 1996 or later. Data from these systems was once available only to professional mechanics. With CarChip, this same data can now be in your hands. CarChip consists of a tiny “black box” data logger, a CD with software for analyzing the data and a download cable.



**CarChip™** fits 1996 and later foreign and domestic vehicles to automatically record and store 75 hours of trip details including:

- Time, date, and distance for each trip
- Hard accelerations and decelerations
- Engine diagnostic trouble codes and status of other engine parameters when the code occurred
- Speed—logged every 5 seconds
- Idle time
- Time and date CarChip® is connected or disconnected

**CarChipE/X™** has all the features of CarChip® plus stores 300 hours of trip details and measures up to four engine parameters every 5 to 60 seconds. Creates an accident log by recording the critical 20 seconds of speed during a hard-braking event. Choose from 23 parameters including:

- RPM
- Coolant temperature
- Intake air temperature
- Short-and long-term fuel trim
- Throttle position
- Intake manifold pressure
- Timing advance
- Oxygen sensor output voltage
- Engine load
- Air-flow rate
- Fuel pressure
- Battery voltage

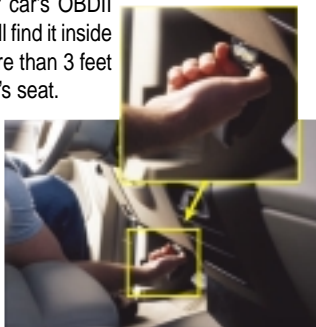
**CarChipE/X with Alarm™** All the features of the CarChip E/X® plus an audible alarm to warn driver when user-settable alarms for speed, hard braking, and acceleration are exceeded.

E96100	(08211) CarChip .....	\$175.00
E96110	(08221) CarChipE/X .....	\$219.00
E96111	(08225) CarChipE/X with Alarm .....	\$245.00
E96120	(08241) CarChip Fleet .....	\$245.00
E96121	(08245) CarChip Fleet with Alarm .....	\$265.00
E96350	(08186) Fleet Management Software .....	\$435.00

## Installation couldn't be easier.

1. Locate your car's OBDII connector. You'll find it inside the car, no more than 3 feet from the driver's seat.

2. Plug the data logger in. The blinking light tells you it's installed and ready to go.



3. Start driving, CarChip will start collecting data your very next trip. Later download to your PC for analysis, graphing and charting.

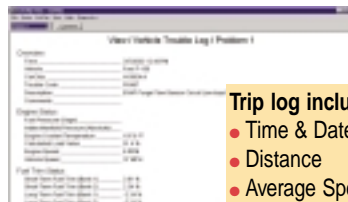
## Save money and time by keeping your car in peak running condition.

If your car's check engine light comes on, use the software to view the trouble code, its description, and the freeze-frame sensor readings. You'll have the information you need to diagnose and fix the problem. And CarChip will even let you turn the check engine light off when you're done!



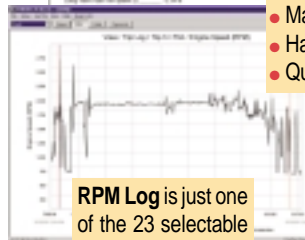
## Software lets you:

- Review and clear diagnostic trouble codes.
- View summary and detail reports for each trip, including vehicle speed every 5 seconds.
- Set thresholds for speed, acceleration, and braking, and view the number of times these thresholds were exceeded.
- Copy data to spreadsheets and text documents for further analysis.



### Trip log includes:

- Time & Date
- Distance
- Average Speed
- Maximum Speed
- Hard Brakings
- Quick Accelerations



**RPM Log** is just one of the 23 selectable engine parameters you can choose to monitor. (E/X models only.)



## System Requirements:

- Windows 98SE/2000/ME/XP and USB port.
- For most cars and trucks sold in the USA and Canada, model years 1996 or later. For a list of excluded vehicles, visit [www.carchip.com](http://www.carchip.com). Vehicles sold outside the USA and Canada may or may not be compatible.



**Award-winning CarChip®**—finalist in TechTV's 2003 Best of CES awards and winner of SEMA 2003 Best Engineered Product.



380 Henderson Dr., Regina, SK Canada S4N 5W9

Ph: 306-721-6455 e-mail:

[farmtronics@sasktel.net](mailto:farmtronics@sasktel.net)

website: <http://www.farmtronics.com>

1-800-667-8001

**FARMTRONICS®**